

# Hanson Packed Products

## FastSet PostFix

### Technical Data Sheet



#### DESCRIPTION

Hanson Fast Set PostFix is a simple to use fast-setting concrete mix for fixing posts in the ground. It requires no pre-mixing before use. Hanson Fast Set Postfix contains Portland cement and special additives together with sharp sand (Aggregate Mix also contains 10mm gavel).

#### APPLICATIONS

Fence posts, gate posts, pergolas, garden lighting and rotary lines.

#### PERFORMANCE

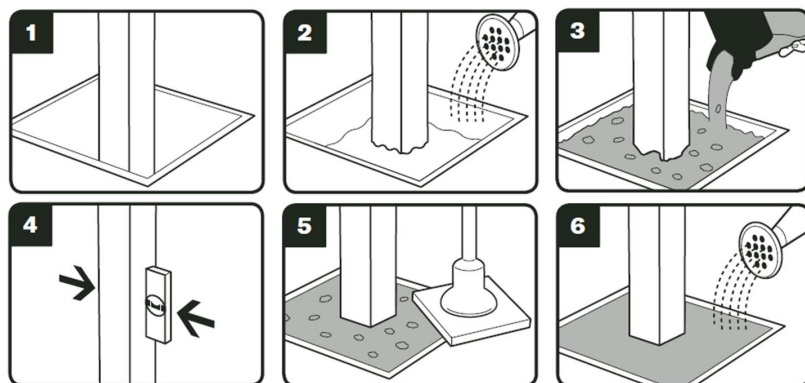
Property	Initial Setting Time	Compressive Strength 1 Hour	Compressive Strength 28 Days
FastSet PostFix	< 5 minutes	> 2 N/mm <sup>2</sup>	> 20 N/mm <sup>2</sup>

#### USAGE RATE

Post size	Hole size (width x depth)	Number of bags required
75mm Square (3")	200mm (8") x 450mm (18")	1 bag
	200mm (8") x 600mm (24")	1 bag
	200mm (8") x 750mm (30")	1 bag
	250mm (10") x 450mm (18")	1-2 bags
	250mm (10") x 600mm (24")	1-2 bags
	250mm (10") x 750mm (30")	1-2 bags
100mm Square (4")	250mm (10") x 450mm (18")	1-2 bags
	250mm (10") x 600mm (24")	1-2 bags
	250mm (10") x 750mm (30")	1-2 bags
	300mm (12") x 450mm (18")	1-2 bags
	300mm (12") x 600mm (24")	2 bags
	300mm (12") x 750mm (30")	2-3 bags

#### INSTRUCTIONS FOR USE

- (1) Position post in hole and (2) add two litres of water
- (3) Empty the complete bag into hole around the post.
- (4) Check the position of the post and adjust as necessary.
- (5) Tamp to remove any air bubbles.
- (6) If necessary, sprinkle more water to mix any remaining powder left on the surface.



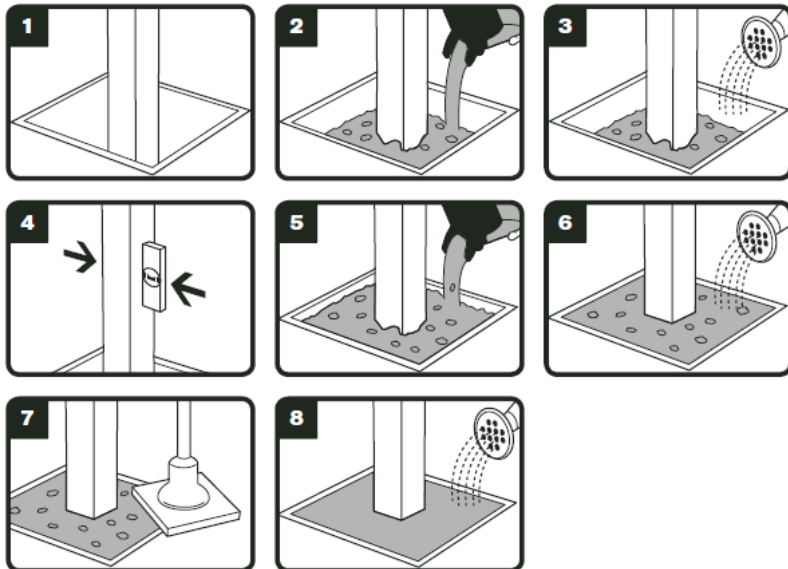
Allow around 5 minutes for initial set to take place – following this, the post will remain in a vertical position unsupported. Postfix will achieve appreciable strength after 2-4 hours depending on ambient conditions but is best left overnight before attaching fence panels etc.



## ALTERNATIVE INSTRUCTIONS FOR USE

If the water drains too quickly

- (1) Position post in hole.
- (2) Empty half of bag into hole, and (3) add 1 litre of water.
- (4) Check the position of the post and adjust as necessary.
- (5) Add rest of bag, and (6) add another 1 litre of water.
- (7) Tamp to remove any air bubbles.
- (8) If necessary, sprinkle more water to mix any remaining powder left on the surface.



Alternatively the hole can be lined with a plastic bag or similar to stop the water draining away.

## CONDITIONS OF USE

- As a general rule, concrete should be placed within the range of 10°C to 30°C.
- In cold weather, setting times may be extended and strength development delayed.
- Freshly placed PostFix should be protected from low temperatures to avoid frost damage.
- Hanson Cement cannot be held responsible for poor workmanship.
- To avoid premature deterioration of Hanson PostFix cement please follow the correct storage requirements.

## STORAGE

Bags should be stored unopened, clear of the ground in cool dry conditions and protected from excessive draft and all sources of moisture. The maximum shelf life of the product is stated on the bag.

## TECHNICAL SUPPORT

For further advice please contact Hanson Cement's Technical Helpline on 0330 123 2441.

## HEXAVALENT CHROMIUM (VI)

In accordance with the Regulation EC 1907/2006 (REACH), the soluble chromium (VI) content is limited to a maximum of 2ppm. The chromium (VI) content is determined in accordance with EN 196-10. The maximum shelf life of the product is stated on the bag.

## HEALTH AND SAFETY

Cement causes skin, eye and respiratory irritation, severe burns and dermatitis. Always wear suitable personal protective equipment (PPE) and refer to the full Material Safety Data Sheet for further information.

### For further information contact:

Hanson Cement  
Ketton  
Stamford  
Lincolnshire  
PE9 3SX

[Hanson.co.uk](http://Hanson.co.uk)

### Customer Services:

Tel: 0330 123 4525  
Fax: 01780 727 008  
Email: [cement@hanson.com](mailto:cement@hanson.com)