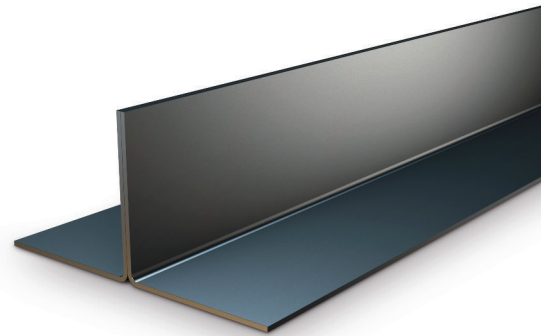


External Solid Wall Lintels - CN50C - CN51C

Exterior solid wall lintels

Benefits

Duplex Corrosion Protection System
Ensures optimum durability and longevity

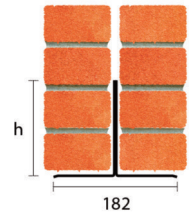


For two separate leaves of a
215mm fairface brick wall

Standard Duty



Standard lengths are available
from 900-2700 in 300mm increments



	CN50C	CN51C
Standard lengths (mm)	900-1800	2100-2700
SWL (kN)	10	12
Weight (kg/m)	9.0	12.7
Nominal height 'h' (mm)	91	167

The SWL (safe working load) is based on the total UDL (uniform distributed load) over maximum span using 150mm end bearings.

www.catnic.com

Care has been taken to ensure that the contents of this publication are accurate, but Tata Steel Europe Limited and its subsidiaries, which includes Tata Steel UK Limited, do not accept responsibility or liability for errors or information that is found to be misleading. Before using products or services supplied or manufactured by Tata Steel Europe Limited and its subsidiaries, customers should satisfy themselves as to their suitability.

© Copyright 2015 Tata Steel UK Limited.